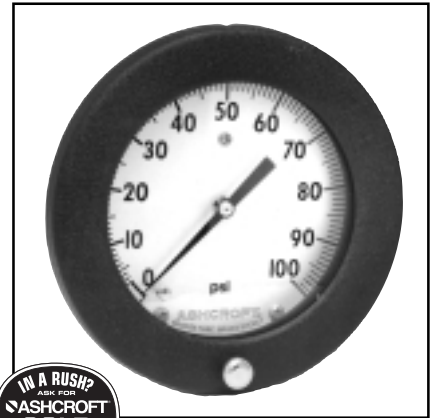


- Available in 4½" and 6" dial sizes
- Open-front case style, black epoxy-painted aluminum case
- Hinged-steel black enamel crinkle-finish panel ring
- Nonadjustable pointer

The Ashcroft® Type 1017 gauge is the most economical of the general service gauges when flush panel-mounting is required.



The following Table is *not* for conversion purposes.

STANDARD RANGES <sup>(4)</sup>		
Pressure psi	kg/cm <sup>2</sup> - bar	kPa
0/15	0/1	0/100
0/30	0/1.6	0/160
0/60	0/2.5	0/250
0/100	0/4	0/400
0/200	0/6	0/600
0/300	0/10	0/1000
0/400	0/16	0/1600
0/600	0/25	0/2500
0/800	0/40	0/4000
0/1000	0/60	0/6000
0/1500	0/100	0/10,000
0/2000	0/160	0/16,000
0/3000	0/250	0/25,000
0/4000	0/400	0/40,000
0/5000	0/600	0/60,000
0/6000	0/750	0/75,000
0/7500	0/10,000	0/100,000
0/10,000	0/15,000	0/150,000
0/20,000	0/20,000	0/200,000
<b>Vacuum</b>		
30" /0" Hg	-1/0	-100/0
<b>Compound</b>		
30" Hg/15 psi	-1/0/1.5	-100/0/150
30" Hg /30 psi	-1/0/3	-100/0/300
30" Hg /60 psi	-1/0/5	-100/0/500
30" Hg/100 psi	-1/0/9	-100/0/900
30" Hg /150 psi	-1/0/15	-100/0/1500
30" Hg/300 psi	-1/0/24	-100/0/2400

BOURDON SYSTEM SELECTION <sup>(5)</sup>					
Ordering Code Conn. <sup>(2)</sup>	Bourdon Tube & Tip Material <sup>(1)</sup> (all joints TIG welded except "A")	Socket Material	Tube	Range Selection Type	NPT Limits (psi)
A	Grade A Phosphor Bronze Brass Tip, Silver Brazed	Brass	C-Tube	12/1000	¼
B	4130 steel	1019 steel	C-Tube	15/1500	¼
			Helical	2000/5000	½
R	316 stainless steel	1019 steel	C-Tube	12/1500	¼
			Helical	2000/20,000	½
S	316 stainless steel	316 stainless steel	C-Tube	12/1500	¼
			Helical	2000/20,000	½
P <sup>(3)(5)</sup>	K Monel	Monel 400	C-Tube	15/1500	¼
			Helical	2000/30,000	½

- (1) For selection of the correct bourdon system material, see the media application table on page 178.
- (2) Optional connections available: ½ NPT where ¼ NPT is standard, ¼ NPT where ½ NPT is standard.
- (3) Use for applications where NACE Standard MR-01-75 is specified.
- (4) Single-scale and dual-scale ranges available.
- (5) 6" dial not available with monel or steel systems.

**TO ORDER THIS 1017 PRESSURE GAUGE:**

**Select:** \_\_\_\_\_ **45**      **1017**      **A**      **02B**      **XXX**      **1000 psi**

- Dial size—4½", 6" \_\_\_\_\_
- Case type—1017 \_\_\_\_\_
- Tube and socket material \_\_\_\_\_
- Connection size—¼ (02), ½ (04) \_\_\_\_\_
- Connection location—Back (B) only \_\_\_\_\_
- Optional features—see page 108 \_\_\_\_\_
- Standard pressure range—1000 psi \_\_\_\_\_  
Accessories—see pages 166-173