

1150H Reid Vapor Test Gauge

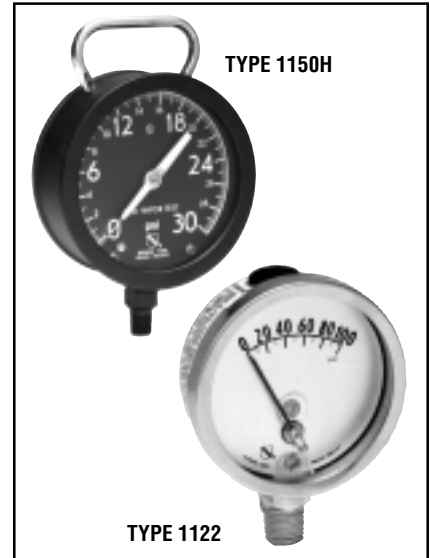
- Accuracy Grade 2A (0.5% F.S.)
- Dial size 4½" only
- Black dial and white pointer

The Ashcroft® Type 1150H is a specialized pressure gauge used by the petroleum industry to measure vapor pressures of various petroleum products.

1122KE/KF

- Accuracy Grade A (2-1-2%)
- Dial size 2½" only
- Movementless

The Ashcroft® Type 1122 is a specialized product used where a movementless gauge is specified for some pump, turbine and compressor applications.



SPECIFICATIONS

Gauge Type Number	Dial Size (Inches)	Case & Ring Material Finish	Bourdon Tube & Tip Material (all joints welded)	Socket Material	Pressure Range (psi)	Pointer	Movement	NPT Connection
Reid Vapor Test 1150H	4½	Case: Aluminum Ring: Threaded Aluminum black epoxy coated	Phosphor Bronze Tip: Brass (All joints silver brazed)	Brass	15/600	Micrometer Adjustable	Stainless steel Teflon coated, pinion and sector shaft, rotary geared	¼
Gearless ⁽¹⁾ 1122KE 1122KF	2½	Case: Stainless steel Ring: Bayonet Lock, St.St. Both polished	Phosphor Bronze Tip: Brass (All joints silver brazed)	Brass	15/1000	Non adjustable	Crank Type	¼

TYPE 1150H			
Range		Dial Graduations	
kg/cm kilograms per sq. cm.	bar	Figure Interval	Minor Graduation
0/1	0/1	0.1	0.01
0/1.6	1.6	0.2	0.02
0/2.5	2.5	0.5	0.05
0/4	0/4	0.5	0.05
0/6	0/6	0.5	0.1
0/10	0/10	1	0.1
0/16	0/16	2	0.2
0/25	0/25	5	0.5
0/40	0/40	5	0.5

Range			Dial Graduations	
kPa (kilopascal)	Figure Interval	Minor Graduation		
0/100	10	1		
0/160	20	2		
0/250	50	5		
0/400	50	5		
0/600	50	10		
0/1000	100	10		
0/1600	200	20		
0/2500	500	50		
0/4000	500	50		

TYPE 1122			
Range		Dial Graduations	
kg/cm kilograms per sq. cm.	bar	Figure Interval	Minor Graduation
0/1	0/1	0.1	0.01
0/1.6	0/1.6	0.2	0.02
0/2.5	0/2.5	0.5	0.05
0/4	0/4	0.5	0.05
0/6	0/6	0.5	0.1
0/10	0/10	1	0.1
0/16	0/16	2	0.2
0/25	0/25	5	0.5
0/40	0/40	5	0.5
0/60	0/60	5	1

Compound			
-1/0/1.5	-1/0/1.5	.5	.05
-1/0/3	-1/0/3	.5	.05
-1/0/5	-1/0/5	.5	.1

Range				Dial Graduations	
kPa (kilopascal)	Figure Interval	Minor Graduation	Dual-Scale psi		
0/100	10	1	0/14		
0/160	20	2	0/22		
0/250	50	5	0/35		
0/400	50	5	0/55		
0/600	50	10	0/85		
0/1000	100	10	0/140		
0/1600	200	20	0/220		
0/2500	500	50	0/350		
0/4000	500	50	0/550		
0/6000	500	100	0/850		

Compound			
-100/0/150	50	5	30 Hg/20
-100/0/300	50	5	30 Hg/40
-100/0/500	50	50	30 Hg/70

STANDARD RANGES		
Range psi	Figure Interval	Minor Graduation
Type 1150H		
0/15	1	0.1
0/30	2	0.2
0/45	3	0.2
0/60	4	0.25
0/100	5	0.5
0/200	10	1
0/250	10	1
0/300	10	1
0/600	20	2
Type 1122 (60° dial arc except 15psi-45°)		
0/15	5	1
0/30	10	2
0/60	15	5
0/100	20	10
0/160	40	10
0/200	50	10
0/300	100	25
0/400	100	25
0/600	150	50
0/1000	250	50

(1) The 1122KE is stem mounted.
 The 1122KF is surface mounted with a front flange.

TO ORDER THESE 1150H & 1122 GAUGES:

Select: _____ 45 _____ 1150 _____ H _____ 02L _____ XXX _____ 600 psi

1. Dial size—2½", 4½" _____

2. Case type _____

3. Tube and socket material—see chart above _____

4. Connection size—¼ (02) _____

5. Connection location—Lower (L) _____

6. Optional features—see page 108 _____

7. Standard pressure range 600 psi _____

Accessories—see pages 166-173