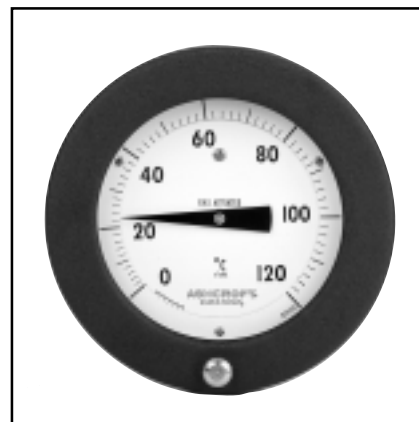


- **Exclusive movementless design resists shock and vibration – no gears to wear or misalign resulting in increased instrument life**
- **Gas-operated molecular sieve**
- **No elevation error**
- **Mercury free**
- **One bulb size for all ranges**
- **1% full-span accuracy**
- **Maxivision<sup>®</sup> dial**
- **Readily available – two to three weeks delivery**
- **Limited five-year warranty**

An aluminum case with a durable epoxy finish. Designed specifically for panel mounting. A hinged ring permits glass replacement and pointer adjustment. Available in 4½", 6" and 8½" sizes.


**SELECTION TABLE**

600A — 02		C12					B01		A1		L07		AK		
Table 1		Table 2					Table 3		Table 4		Table 5		Table 6		
CASE STYLE		CASE SIZE		MOUNTING			BULB STYLES*		ARMOR STYLE		LINE LENGTH		RANGES		
CODE	DESCRIPTION	CODE	SIZE	SURFACE	FLUSH	LOWER	REAR	CODE	DESCRIPTION	CODE	DESCRIPTION	CODE	LINE LENGTH	CODE	SINGLE RANGES
02	ALUMINUM HINGED RING	C12	4½"		✓		✓	B01	12" Bendable extension with ½ NPT union connection	A1	Stainless Steel Spring	L01	5'	AB	-320/200°F
		C27	6"		✓		✓	B03	Plain bulb with rigid extension, no union			L03	10'	AE	-100/100°F
		C35	8½"		✓		✓	B08	Plain bulb with rigid extension, ½ NPT union on armor			L07	20'	AG	-40/180°F
								B17	18" Bendable extension with ½ NPT union connection			L09	30'	AK	20/240°F
								B18	24" Bendable extension with ½ NPT union connection			L13	50'	AL	50/300°F
									*Minimum recommended insertion length ("u" dimension) in liquids is 4 inches and in gases is 6 inches for standard ⅜" x 3" bulb			L19	80'	AN	50/550°F
														AR	50/750°F
														AT	400/1200°F
														AY	-200/100°C
														BL	-80/40°C
														BN	-40/80°C
														BS	0/120°C
														BT	10/150°C
														BU	0/300°C
														BW	0/400°C
														BJ	200/650°C
														<b>DUAL RANGES</b>	
														CE	20/240°F
														CF	0/120°C
															50/550°F
															0/300°C
														DR	50/300°F
															10/150°C
														DT	-40/180°F
															-40/80°C

**TO ORDER THIS DURATEMP 600A-02 THERMOMETER:**
**Select:**

- Case Style: Aluminum/Hinged Ring \_\_\_\_\_ Table 1 \_\_\_\_\_ **600A 02**
- Case Size & Mounting: 4½" Flush, Rear \_\_\_\_\_ Table 2 \_\_\_\_\_ **C12**
- Bulb Style: 12" Bendable Extension with Union Connection \_\_\_\_\_ Table 3 \_\_\_\_\_ **B01**
- Armor Style: Stainless Steel Spring \_\_\_\_\_ Table 4 \_\_\_\_\_ **A1**
- Line Length: 20 feet \_\_\_\_\_ Table 5 \_\_\_\_\_ **L07**
- Temperature Range: 20/240°F \_\_\_\_\_ Table 6 \_\_\_\_\_ **AK**
- Options: Stainless Steel Tag \_\_\_\_\_ (See Page 133) \_\_\_\_\_ **XNH**