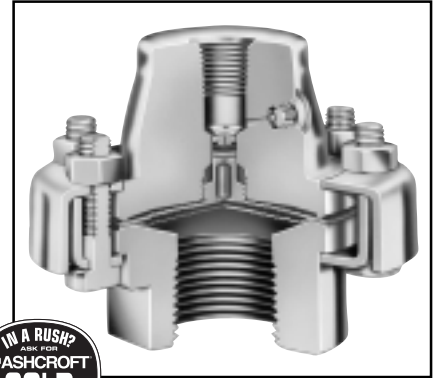


The comprehensive line of Ashcroft® diaphragm seals will meet a wide variety of application or installation requirements. Over 30,000 variations are possible with the types, connections and materials available.

- The top housing and diaphragm capsule are interchangeable with all Ashcroft bottom housings.
- A fill/bleed connection is standard, which permits filling the seal and instrument simultaneously after evacuation and allows the fill to flow into the completed unit.
- A Viton O-ring, compatible with all standard fill fluids, and a Teflon back-up ring provide a seal between the diaphragm capsule and the top housing.
- The diaphragm is Teflon coated to provide an integral gasket, thus assuring a leak-tight connection between the diaphragm and the bottom housing.
- Top housing and pressure instrument are removable.
- Continuous-duty design will prevent loss of process fluid if pressure instrument is removed or fails.



SELECTION TABLES

Table A Process Connection/Type Number

Process Connection	Process Connection Size/Code—Inches										Type Number			
	Size Code	¼	½	¾	1	1 ½	2	3	4	6	8	Capsule	Welded & Bonded ⁽³⁾	Clamped ⁽⁴⁾
Threaded—female NPT		•	•	•	•	•	•	•	•	•	•	100	200	300
Threaded—female NPT (with flushing connection)		•	•	•	•	•	•	•	•	•	•	101	201	301
Flanged ⁽¹⁾			•	•	•	•	•	•	•	•	•	102	202	302
Flanged (with flushing connection)			•	•	•	•	•	•	•	•	•	103	203	303
In-line—threaded NPT		•	•	•	•	•	•	•	•	•	•	104	204	304
Saddle											• AND LARGER	105	205	—
In-line—flanged ⁽²⁾			•	•	•	•	•	•	•	•	•	106	206	—
In-line—socket weld		•	•	•	•	•	•	•	•	•	•	107	207	—

Pressure Ratings—All 2500 psi except flanged seals are per ASME B 16.5, temperature limit determined by diaphragm, bottom housing and/or filling fluid.

**Table B
Diaphragm Material**

Material	Code
316L stainless steel	S
304 stainless steel	C
K-Monel ⁽⁶⁾	P
Nickel	N
Carpenter 20	D
Tantalum	U
Hastelloy B	G
Hastelloy C ⁽⁷⁾	H
Teflon ⁽⁵⁾	T
Viton ⁽⁹⁾	Y
Kalrez ⁽¹²⁾	K
Titanium	TI

**Table C
Bottom Housing Materials**

Material	Code
Steel	B
304L stainless steel	C
316L stainless steel	S
Hastelloy B	G
Hastelloy C ⁽⁷⁾	H
Carpenter 20	D
Monel "400" ⁽⁷⁾	M
Inconel "600"	W
Nickel	N
PVC ⁽⁸⁾	V
Tantalum clad stain. steel ⁽⁹⁾	SU
Halar coated steel ⁽¹⁰⁾	BH
Teflon flanged steel ⁽¹¹⁾	T
Kynar ⁽¹³⁾⁽¹⁴⁾	KY
Titanium ⁽¹³⁾	TI

**Table D
Instrument Connection**

Size - NPT	Code
¼	02T
½	04T

Table E Filling Fluid

Filling	Service	Connection to Instrument	Temperature Range °F	Code
Glycerin	Pressure	Direct Only	0/400	CG
Silicone	Pressure/Vacuum	Direct or Flexible Line	-40/600	CK
Halocarbon	Pressure/Vacuum in presence of strong oxidizing agent	Direct or Flexible Line	-70/300	CF
Syltherm	Pressure/Vacuum	Direct or Flexible Line	-40/750	HA

TO ORDER THIS TYPE 100 DIAPHRAGM SEAL:

1. From **Table A**...select TYPE NUMBER based on process connection, process connection size and diaphragm type/construction. (e.g., Threaded/1"capsule—code-10-100)
2. From **Table B**...select DIAPHRAGM MATERIAL. (e.g., 316L stainless steel—code S)
3. From **Table C**...select BOTTOM HOUSING MATERIAL. (e.g., 316 stainless steel—code S)
4. From **Table D**...select INSTRUMENT CONNECTION size. (e.g., ¼ NPT—code 02T)
5. From **Table E**...select FILLING FLUID, if diaphragm seal will be attached to instrument. (e.g., Glycerin—code CG)

Coded order: 10-100SS-02T-CG

NOTES:

- (1) 150, 300, 600, 900 & 1500 class flanges.
- (2) 1" 150 thru 8" 300 class flanges only.
- (3) Metal diaphragms welded; Teflon & Viton diaphragms bonded.
- (4) Metal diaphragms limited to Types 300 & 301 only. Viton diaphragm in Types 302 & 303 limited to 2" - 150 class flange.
- (5) Types 200 & 300 series only - Temp. Limits: -40/400°F.
- (6) Types 200 & 300 series only - Max. Pressure: 500 psi. Temp. Limits: -40/350°F.
- (7) Use on applications where NACE standard MR-01-75 is specified.
- (8) Maximum Press./Temp.
Threaded: 200 psi/74°F, 125 psi/125°F, 80 psi/150°F.
Flanged: 75 psi/100°F.
- (9) Types 102 & 202 only.
- (10) Types 102, 202 & 302 only - Temp. Limits: -40/300°F.
- (11) Only available in 1", 1 ½", & 2" 150 class, Types 102, 202 & 302.
Max. Press./Temp. - 270 psi and 150°F.
Consult factory for conditions beyond these limits.
- (12) Type 300 series only -
Max. Pressure: 500 psi
Temp. Limits: 30/212°F.
- (13) On application.
- (14) Types 100, 200 and 300 series only. Maximum Pressure/
Temp.: 200 psi and 180°F.