

**Type 200 Welded**

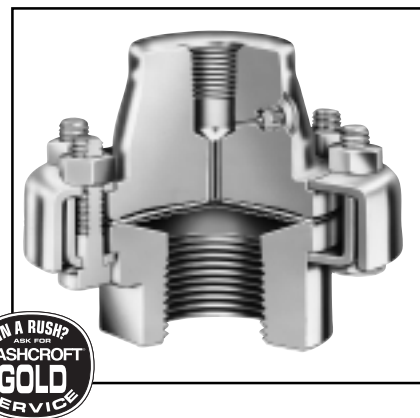
- Teflon coated, continuous-duty diaphragm capsule is welded to the top housing, which is then clamped to a bottom housing.
- Fill/bleed connection is standard.
- Top housing and pressure instrument are removable.
- Available in same process connections, materials, types and sizes as the Type 100 capsule design.
- Top housing is interchangeable with all standard Ashcroft® bottom housings.

**Type 200 Bonded Viton**

Similar in construction, materials, and product features to the Type 300 clamped Viton diaphragm seal on page 62, the Viton diaphragm in the Type 200 seal is bonded permanently to the top housing—and is the removable type.

**Type 200 Bonded Teflon**

Similar in construction, materials, and product features to the Type 300 Clamped Teflon diaphragm seal on page 62, the Teflon diaphragm in the Type 200 seal is bonded permanently to the top housing—and is the removable type.


**SELECTION TABLES**
**Table A Process Connection/Type Number**

Process Connection	Process Connection Size/Code—Inches											Type Number		
	Size Code	1/4	1/2	3/4	1	1 1/2	2	3	4	6	8	Capsule	Welded & Bonded <sup>(3)</sup>	Clamped <sup>(4)</sup>
Threaded—female NPT		•	•	•	•	•	•	•	•	•	•	100	200	300
Threaded—female NPT (with flushing connection)		•	•	•	•	•	•	•	•	•	•	101	201	301
Flanged <sup>(1)</sup>		•	•	•	•	•	•	•	•	•	•	102	202	302
Flanged (with flushing connection) <sup>(1)</sup>		•	•	•	•	•	•	•	•	•	•	103	203	303
In-line—threaded NPT		•	•	•	•	•	•	•	•	•	•	104	204	304
Saddle									•	AND LARGER		105	205	—
In-line—flanged <sup>(2)</sup>			•	•	•	•	•	•	•	•	•	106	206	—
In-line—socket weld		•	•	•	•	•	•	•	•	•	•	107	207	—

Pressure Ratings—All 2500 psi except flanged seals are per ASME B 16.5, temperature limit determined by diaphragm, bottom housing and/or filling fluid.

**Table B Diaphragm Material**

Material	Code
316L stainless steel	S
304 stainless steel	C
K-Monel <sup>(7)</sup>	P
Nickel	N
Carpenter 20	D
Tantalum	U
Hastelloy B	G
Hastelloy C <sup>(7)</sup>	H
Teflon <sup>(5)</sup>	T
Viton <sup>(6)</sup>	Y
Kalrez <sup>(12)</sup>	K
Titanium	TI

**Table C Bottom Housing Materials**

Material	Code
Steel	B
304L stainless steel	C
316L stainless steel	S
Hastelloy B	G
Hastelloy C <sup>(7)</sup>	H
Carpenter 20	D
Monel “400” <sup>(7)</sup>	M
Inconel “600”	W
Nickel	N
PVC <sup>(8)</sup>	V
Tantalum clad stain. steel <sup>(9)</sup>	SU
Halar coated steel <sup>(10)</sup>	BH
Teflon flanged steel <sup>(11)</sup>	T
Kynar <sup>(13)(14)</sup>	KY
Titanium <sup>(13)</sup>	TI

**Table D Instrument Connection**

Size – NPT	Code
1/4	02T
1/2	04T

**NOTES:**

- (1) 150, 300, 600, 900 & 1500 class flanges.
- (2) 1” 150 thru 8” 300 class flanges only.
- (3) Metal diaphragms welded; Teflon & Viton diaphragms bonded.
- (4) Metal diaphragms limited to Types 300 & 301 only. Viton diaphragm in Types 302 & 303 limited to 2” – 150 class flange.
- (5) Types 200 & 300 series only – Temp. Limits: –40/400°F.
- (6) Types 200 & 300 series only – Max. Pressure: 500 psi. Temp. Limits: –40/350°F.
- (7) Use on applications where NACE standard MR-01-75 is specified.
- (8) Maximum Press./Temp.  
Threaded: 200 psi/74°F, 125 psi/125°F, 80 psi/150°F.  
Flanged: 75 psi/100°F.
- (9) Types 102 & 202 only.
- (10) Types 102, 202 & 302 only – Temp. Limits: –40/300°F.
- (11) Only available in 1”, 1 1/2”, & 2” 150 class, Types 102, 202 & 302.  
Max. Press./Temp. – 270 psi and 150°F.  
Consult factory for conditions beyond these limits.
- (12) Type 300 series only –  
Max. Pressure: 500 psi  
Temp. Limits: 30/212°F.
- (13) On application.
- (14) Types 100, 200 and 300 series only. Maximum Pressure/Temp.: 200 psi and 180°F.

**Table E Filling Fluid**

Filling	Service	Connection to Instrument	Temperature Range °F	Code
Glycerin	Pressure	Direct Only	0/400	CG
Silicone	Pressure/Vacuum	Direct or Flexible Line	–40/600	CK
Halocarbon	Pressure/Vacuum in presence of strong oxidizing agent	Direct or Flexible Line	–70/300	CF
Syltherm	Pressure/Vacuum	Direct or Flexible Line	–40/750	HA

**TO ORDER THIS TYPE 200 DIAPHRAGM SEAL:**

1. From Table A...select TYPE NUMBER based on process connection, process connection size and diaphragm type/construction. (e.g., Threaded/1”/welded—code-10-200)
2. From Table B...select DIAPHRAGM MATERIAL. (e.g., 316L stainless steel—code S)
3. From Table C...select BOTTOM HOUSING MATERIAL. (e.g., 316 stainless steel—code S)
4. From Table D...select INSTRUMENT CONNECTION size. (e.g., 1/4 NPT—code 02T)
5. From Table E...select FILLING FLUID, if diaphragm seal will be attached to instrument. (e.g., Glycerin—code CG)

**Coded order:** 10–200SS–02T–CG